



## Living Wall

OUC—The *Reliable One's* Living Wall is just one way the utility embraces sustainability to ensure a greener future. The vertical garden uses low-volume (or micro) irrigation to conserve water. During each season, the wall is refreshed with Florida-friendly and drought-tolerant plants. Plants are strategically placed (or companion planted) so they are stronger and can thrive, while also allowing for pest and disease mitigation, creation of pollinators and attractors for butterflies, bees and birds.

## Benefits

- Helps reduce carbon emissions and various air pollutants
- Serves as an organic filter for runoff water
- Acts as a home for beneficial insects and wildlife
- Boosts employee morale and improves overall office atmosphere
- Increases foot traffic



The *Reliable One*®

Orlando Utilities Commission  
100 West Anderson Street Orlando, Florida 32801  
www.ouc.com



# LIVING WALL & RAIN HARVEST GARDEN

*Sustainable Conservation.*



Weaving Sustainability  
Through Everything We Do



www.ouc.com

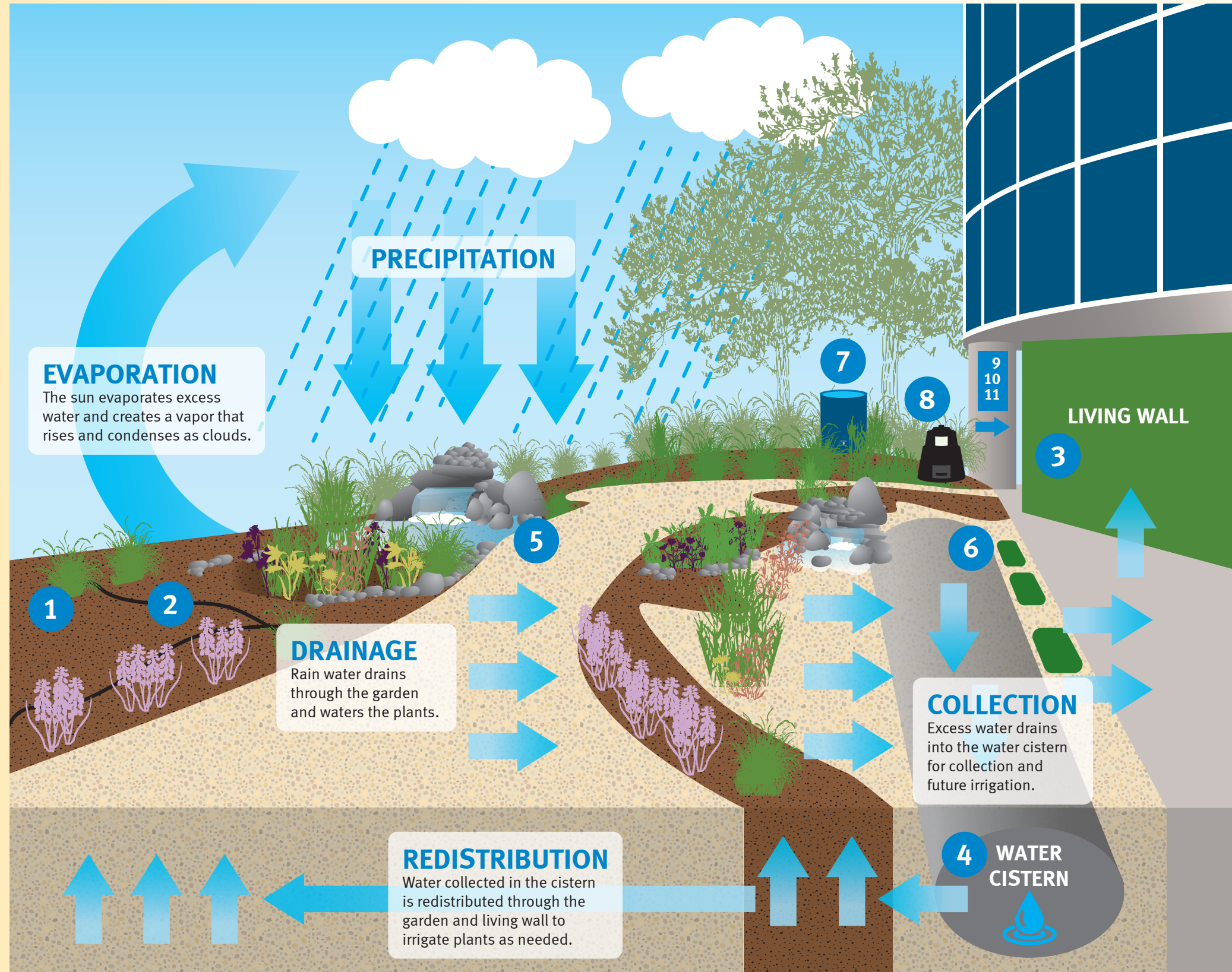
CS-1606V2

# SUSTAINABLE RAIN HARVEST GARDEN

OUC—The *Reliable One's* Living Wall and Rain Harvest Garden was established in 2016 in partnership with Seed2Source and the St. Johns River Water Management District. After the closing of OUC's customer service centers, an opportunity presented itself to repurpose a space that was once used as a payment drive-through location. The project was completed in two phases: the first phase was the Living Wall with an adjoining picnic area and the second phase was the Rain Harvest Garden.

## OUC'S VISION

OUC—The *Reliable One's* Living Wall and sustainable Rain Harvest Garden demonstrates water conservation practices and Florida-friendly gardening to ensure a sustainable future for our community.



- The plant materials** (see *handout for more details*) include Florida-friendly plants that are strategically planted (or companion planted) to allow for pest and disease mitigation and plant nutrient bioavailability, as well as to create pollinators and attractors such as butterflies, bees and birds.
- The drip irrigation system** saves water and nutrients by allowing water to drip slowly to the roots of plants from above the soil surface. It minimizes evaporation which makes it more efficient than other types of irrigation systems, such as surface irrigation or sprinkler irrigation.
- The micro emitters** can be adjusted to emit water from 0–2 gallons per hour through manual adjustment. This allows a gardener to individually select the dosage of water a plant requires for optimal health, rather than wasting water in ineffective areas.
- The rain capture cistern** is set up to collect rainwater in two locations, thus allowing the garden to harvest this water, utilizing efficient pumps and timers. In addition, the cistern captures and collects excess water from the Living Wall during its timed watering schedules.
- The fountains** provide an aesthetic and serene feature. The fountains use water from the cistern, while drowning out the sounds from the busy roadways.
- The water source** that feeds the watering system is designed to draw from potable, rain harvesting water and its adjacent pond. Through a dedicated valve system, we can adapt the proper water source while allowing flexibility and adaptation to different environmental conditions.
- The rain barrel** is another tactic of harvesting rain water. OUC sponsors the Water Color Project, an educational outreach effort designed to encourage water conservation by having students decorate rain barrels on an annual basis.
- The composting bins** house some of the waste generated by the wall, garden and OUC's Wellness Lunch & Learn events that is composted through the Greenworks Orlando compost program (City of Orlando) and is in turn reused in the Living Wall and Rain Harvest Garden.
- The smart irrigation controller** allows the activation and control of the irrigation system from anywhere. It automatically adjusts watering based on needs and can monitor watering from a smart device. The current system connects data from the nearest weather reporting station to determine if the system should be watering.
- The picnic tables** are 100% recycled UV protected plastic, that won't rot, splinter or crack. They can withstand harsh weather and never need sanding, sealing, painting or staining.
- The support structure** of the wall is made from a 12 foot aluminum pole that once helped light a local street. It was carefully crafted into the design which is made up of three panels engineered to withstand hurricane-force winds. Master Fleet Tech, Phillip Jones, custom-built the support structure for the planting system that holds 228 plants.